

Kwikset

UNITE

Experience convenience, connectivity and seamless access control with the Kwikset UNITE™ EAC Platform. Electronic locks, cloud-based web and mobile software, and smart credentials work together to deliver a simple yet comprehensive solution for managing your multifamily property.

Kwikset UNITE™ Electronic Locks

Kwikset UNITE™ electronic locks are the smart multifamily property upgrade for your mechanical locks.

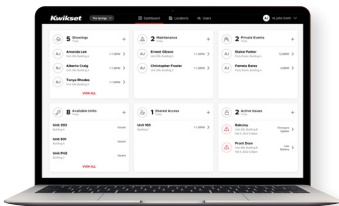
Kwikset UNITE™ Electronic Locks provide multifamily property managers and tenants with a convenient, stylish and efficient way to manage resident door access. They come in a standard lock and interconnect variant and can be controlled by mobile, desktop or physical credentials (fob or card). Kwikset's trusted electronic locks and intuitive software platform offer a cohesive, simple and seamless access control experience.



3 Easy Ways to Engage



Phone App



Desktop Portal

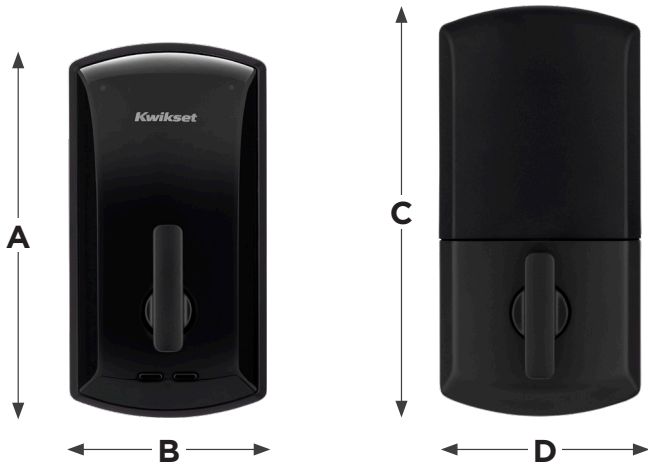


Card/FOB

#1 SELLING U.S. LOCK BRAND*

Numerator TruView, Unit Share Report, 2024

Deadbolt Model #: 1000



Dimensions

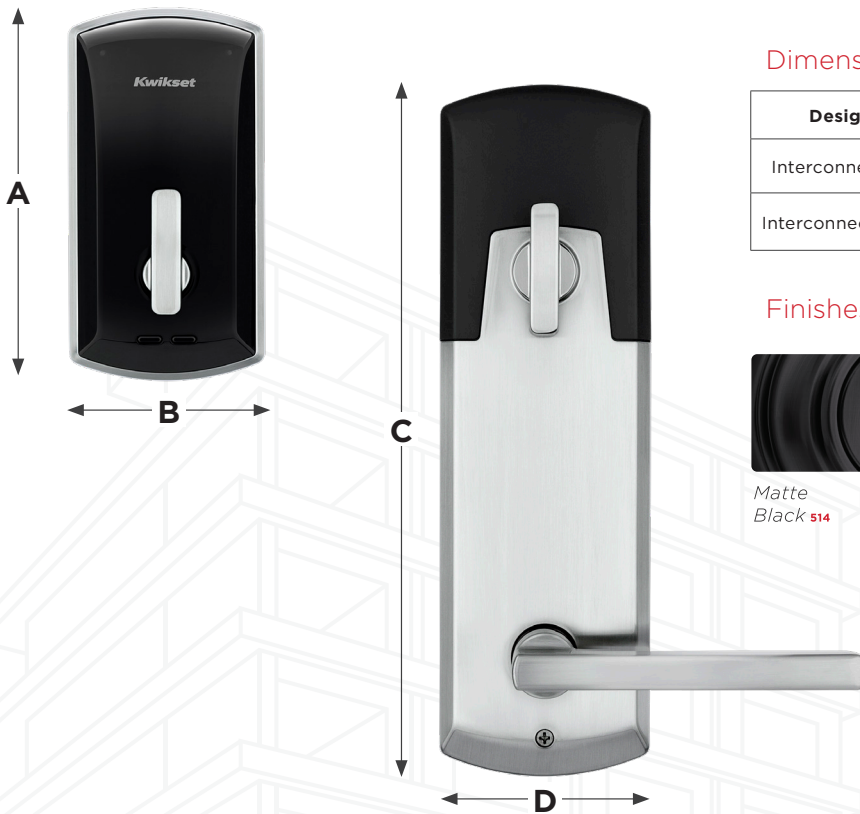
Design	A	B	C	D
Deadbolt	5 11/32"	2 27/32"	5 21/32"	2 27/32"

Finishes Available in split finishes



Matte Black **514** Polished Chrome **26** Satin Chrome **26D** Satin Nickel **15**

Interconnect Model #: 1100



Dimensions

Design	A	B	C	D
Interconnect 4"	5 11/32"	2 27/32"	8 1/4"	3"
Interconnect 5 1/2"	5 11/32"	2 27/32"	9 3/4"	3"

Finishes Available in split finishes



Matte Black **514** Polished Chrome **26** Satin Chrome **26D** Satin Nickel **15**

Interconnect Lever Options



Interconnect Rose Options



Finishes



Matte Black **514** Polished Chrome **26** Satin Chrome **26D** Satin Nickel **15**

Specifications

Mechanical Specifications	
Deadbolt & Interconnect	
Materials	All-metal chassis and escutcheon
Door thickness	1 3/8" to 1 3/4" (thick kits available up to 2 1/4" for DB, up to 2" for IC)
Backsets	Deadbolts and latches (IC) adjustable to fit 2 3/8" or 2 3/4" backsets
Latch Plates	1" x 2 1/4" square & round corner (round standard, square in box)
Deadbolt	Manual Throw Deadbolt 1" (25 mm) tapered throw
Deadbolt Strike Package	Round & Square corner, 1 1/8" x 2 3/4" Round & Square corner, Full lip, 1 3/4" x 2 1/4" (lip length: 17/64") Additional options available.
Bore	2 1/8"
Stile Width	Minimum 4 1/2" stile for 2 3/8" backset, minimum 5" stile for 2 3/4" backset
Battery Cover	Snap-to-Secure cover. No tools required.
Thumb-turn	Spring-loaded return to vertical
Interconnect Only	
Interconnect Size	5.5" and 4.0" CTC (center to center)
Anti-microbial	Microban™ on all levers (IC). Excluding 26 & 26D
Lever Strike Package (IC Only)	Square corner, T-strike, box, 1 1/8" x 2 3/4" Full Lip Square Corner, 1 3/4" x 2 1/4" Full Lip 1/4" Round Corner, 1 3/4" x 2 1/4" Additional options available
Handing	Field reversible (1100 IC)
Electronic Specifications	
Users Capacity	Up to 500 users per lock (additional users with software)
Audits Capacity	Up to 1000 events
Visual and Audible Communications	Exterior LED (red, amber, green) and Audible indicators
Wake-up	Responds to host command in <5 seconds
Communication	BLE Bluetooth RFID (built-in reader)
Connectivity options	Mobile (send updates at the lock) No-Tour with enroll reader & smart credential Off-line No touring: Mobile/app shares updates w/ lock
Available status signals	Battery status
Power	4 AA Batteries Easy access 9v Back-up ports Battery Life: 18 months
OTA Firmware Upgrades	Available
Memory	Non-volatile memory: Retains data w/battery removed
Diagnostics	Diagnostics with software
Operating humidity	0 - 100% non-condensing
Operating Temperature	Exterior: -31° to 185°F (-35° to 85°C) Interior: 32° to 130°F (0° to 54°C)
Certifications	
	1000 DB: ANSI/BHMA A156.36 Grade 2.
	1100 IC: ANSI/BHMA A156.12 Grade 2
	ANSI/BHMA A156.5
	ADA compliant - ANSI A117.1
	UL 90 minute
	Florida Building Code HVHZ listed
	FCC Certification 15C
	AES-256 Bit encryption
Warranty	
	Mechanical and Finish: Limited Lifetime
	Electronics: 2-year limited electronics

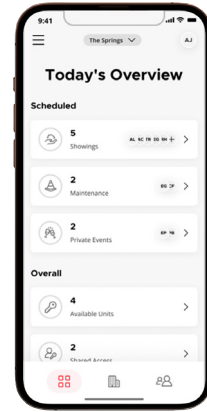
Credentials



EV3 & Prox Access Card
4210



EV3 & Prox Fob
4110



Bluetooth Phone
is also a Credential

Specifications

Technical Specifications		
	FOB	Cards
RF Technologies	Dual Frequency MIFARE DESFire EV3 & 125KHz Prox	
Security Level	EAL 5+	
LEAF Compatibility	Fully Compatible	
Memory Size	8 Kbyte	
Read Range (Reader dependent)	up to 1"	up to 3"
Temperature Range	-31° to 158° F -35° to 70° C	
Dimensions	1 19/32" x 1 1/4" x 3/16"	3 3/8" x 2 1/8" x 1/32"
Material	ABS	PVC + PET
Color	Black ring white center	White/Red
Attachment	Integral clip/ring space	NA
Warranty	5 Year	

Construction Mode Credentials



Construction User EV3 Card
4242



Construction Master EV3 Card
4233